

C&E Priority Based PPB Report

Directorate: Children and Enterprise

Reporting Period: Quarter 4, 01 January 2016 – 31 March 2016

1.0 Introduction

- 1.1 This report provides an overview of issues and progress within the Directorate that have occurred during the period of the report. The way in which traffic light symbols have been used to reflect progress to date is explained within Appendix 1 (section 8).
- 1.2 Please note initials have been provided to indicate which officer is responsible for the commentary to aid Members, as requested by the Children and Young People Policy and Performance Board. A key is provided at the end of the report in Appendix 1 (section 8).

2.0 Key Developments

2.1 Schools Causing Concern – Intervening in failing, underperforming and coasting schools (AMc)

In March 2016, following the Education and Adoption Act 2016 provided new intervention powers for the Secretary of State and expanded the types of maintained schools eligible for interventions to include coasting schools (definition will come later). The Secretary of State will exercise these powers through the Regional Schools Commissioner (RSC). RSCs can now take formal action in any school that falls within the definition of coasting having considered the school position and whether there is a suitable plan in place and the capacity to bring improvement. Local authorities can still monitor and challenge schools where there are concerns and can intervene in maintained schools however it is expected that they work with the RSC in these circumstances. RSCs will be able to issue a warning notice where it is considered the Local Authority has not acted swiftly or robustly enough or lacks capacity to act. The Schools Causing Concern Guidance has now been revised in line with the Education and Adoption Act 2016, and the new arrangements take effect from 18th April 2016. Please use this link to access details of the Education & Adoption Act 2016: <http://www.legislation.gov.uk/ukpga/2016/6/contents/enacted>

2.2 Ofsted Joint Targeted Area Inspections (AMc/TC)

In February 2016 the new Joint Targeted Area Inspections of services for vulnerable children and young people (JTAI) was launched. Ofsted, the Care Quality Commission, Her Majesty's Inspectorate of Constabulary and Her Majesty's Inspectorate of Probation will jointly assess how local authorities, police, health, probation and prison services are working together in an area to identify, support and protect vulnerable children and young people. Each inspection will look in detail at a specific theme. The first inspections are focusing on child sexual exploitation and children missing from home, care or education. Once these have been completed at the end of the summer the next area of focus will be identified. Please use this link to access the guidance: <https://www.gov.uk/government/publications/joint-inspections-of-child-sexual-exploitation-and-missing-children-february-to-august-2016>

2.3 Efficiency Programme (AMc)

As part of the Efficiency Programme a number of divisional restructures have occurred within the Education, Inclusion and Provision Department. In addition, a number of officers have now left the authority either through voluntary early retirement, resignation, redeployment, or promotion. The former 14-19 Division is now incorporated within the Policy, Provision and Performance Division. Operational management of the Halton Play Service has been returned

to the Play Councils Management Committee and a light-touch support approach will be provided by the Division. Teams sitting within the Policy, Provision and Performance Division have been restructured and streamlined to reflect service priorities and lines of reporting adjusted to reflect the new structure.

As a result of this the overall workforce within the department is now reduced. It will be important for workloads to be prioritised and regularly reviewed to ensure that policy and performance officers are focusing on key statutory responsibilities, and supporting those teams with key statutory responsibilities. This will include preparation for a number of potential Ofsted inspections where appropriate and timely support from Policy and Performance teams will be vital. The Policy, Provision and Performance Division will also continue to work with Early Years providers to ensure that they are in a position to deliver the extended entitlement for 2 year old provision of 30 hours per week from September 2017.

2.4 Pan-Cheshire Missing from Home and Care Service Award (AMc)

The Pan-Cheshire Missing from Home and Care service received a Children and Young People Now award for Partnership working across Cheshire.

2.5 Troubled Families (AMc)

Halton achieved 100% payment by results for phased one of the national Troubled Families programme. We are now working towards phase 2 and links with the early intervention and the complex dependency programme.

2.6 Teenage conceptions (AMc)

The rate of under-18 conceptions in England has declined by 51% since 1998, exceeding the goal of the original teenage pregnancy strategy according to data released 9 March by Office of National Statistics. Figures released for 2014 show that 22.8 per 1000 young women under 18 became pregnant, compared with 46.6 per 1000 in 1998, with numbers dropping from 41,089 to 21,282. The under-16 rate has also declined to 4.4 per 1000. Both are now at their lowest level since 1969 when records began. Halton has seen a reduction for the fourth consecutive year and has reduced its teenage conception rate by 42.9% since 1998. There were 72 conceptions in Halton during 2014, compared to 126 conceptions in 1998.

2.7 Social Care Innovation Fund (TC)

The Department for Education (DfE) has announced a further round of bids for the Social Care Innovation Fund. Halton is developing a number of bids in partnership with other local authorities as part of the Liverpool Region.

2.8 Children in Need and Child Protection Team Manager Capacity (TC)

All Children in Need teams including the new iCART service, have permanent full time managers at both tiers (Practice and Principal). There has also been a significant reduction in agency staff across all Children in Need teams. These have been replaced by permanent staff.

2.9 Single Assessment timescales performance (TC)

End of year performance for the timescale for completing Single Assessments by children's social care has shown a marked improvement from earlier in the reporting year. All teams have had this as an area of focus for improvement. Systems and processes are in place to monitor closely, on a weekly basis, to continue this good performance for the coming reporting year.

3.0 Emerging Issues

3.1 White Paper – Education Excellence Everywhere (AMc)

On 17 March 2016 the Secretary of State launched “Education Excellence Everywhere” which alongside the Department of Education Strategy “World-class education and care” set out the government’s plans for education and care over the next five years. The proposed reforms will reduce and redefine the future role of the local authority. One of the seven key priorities outlined within the White paper is that there should be a school-led system with every school an academy and that there be a new clearly defined role for local government focused on ensuring every child has a school place, ensuring the needs of vulnerable pupils are met and acting as a champion for all parents and families. Please use this link to access the white paper: <https://www.gov.uk/government/publications/educational-excellence-everywhere>. Please use this link to access the strategy: <https://www.gov.uk/government/publications/dfe-strategy-2015-to-2020-world-class-education-and-care>

3.2 National Funding Formula (AMc)

On 7 March 2016 the Department for Education (DfE) launched a consultation on the introduction of a national funding formula for schools. The consultation is in two phases and responses to the first phase had to be submitted by 17 April 2016. The first phase of the consultation sought views on the principles that underpin the formula and the pupil characteristics and schools factors to include. Views were also sought on the following key areas:

- The introduction of a school level national funding formula where the funding each pupil attracts to their school is determined nationally
- The implementation of the formula from 2017-18, allocating funding to local authorities to distribute for the first two years and then to schools directly from 2019-20
- The creation of a central schools block for local authorities’ ongoing duties
- Ensure stability for schools through the minimum funding guarantee and by providing practical help, including a restructuring fund.

The consultation cut across both the Easter break and the school holidays which meant the opportunity for local consultation was reduced. Responses were submitted by the Local Authority and the School Forum. Please use this link to access the consultation feedback: <https://www.gov.uk/government/consultations/schools-national-funding-formula>

3.3 High Needs Funding Formula (AMc)

High needs funding is for children and young people with special educational needs or disabilities who need extra support at school, college or alternative provision settings. On 7 March 2016 the DfE launched the consultation on revising the arrangements for funding high needs. As with the consultation on national funding formula, the consultation is in two stages with responses to stage one to be submitted by 17 April 2016. The consultation considered a different methodology to the formula for funding local authorities. It also made suggestions on changes to the distribution of high needs funding to schools, colleges and other institutions. It suggested that unlike the core funding for schools, funding for high needs be distributed and managed by the local authority. Please use this link to access the consultation:

<https://www.gov.uk/government/consultations/high-needs-funding-reformOFSTED>

3.4 Ofsted thematic review of Early Years (AMc)

On 4 April 2016, Ofsted commenced a 2015-16 survey inspection programme on disadvantaged children in early years (aged 0-5). This is a national survey and Halton has been

selected as one of the two North West authorities to be sampled. Ofsted will look at the approaches Halton is taking to support disadvantaged children and families in early years, speaking to officers and visiting a range of settings. The findings of the survey will be published later in the year.

3.5 Ofsted Local Area SEND inspection (AMc)

In October 2015 a consultation document was published which outlined Ofsted and the Care Quality Commission proposal for inspecting how effectively local areas fulfil their responsibilities towards children and young people who have special educational needs and or disabilities. The consultation ended in January 2016. All local areas will be inspected over a five year period with inspections teams which will include a HMI lead, a CQC inspector and a local authority Ofsted Inspector. Local areas will be expected to know how effective they are in identifying and meeting the needs of children and young people with SEN and or disabilities and must be able to demonstrate this. The new inspection process will commence in May 2016 however to date the local area SEND inspection framework and the local authority SEND inspection handbook have yet to be published. Please use this link to access the consultation: https://www.gov.uk/government/uploads/system/uploads/attachment_data/file/467416/CONSULTATION_DOCUMENT_Local_area_SEND_consultation_FINAL_2015_10_12.pdf

3.6 Childcare for working parents (AMc)

On 4 April 2016 the DfE launched a consultation on the its offer of 30 hours free childcare for working parents of 3-4 year olds. The consultation is seeking the views from parents and professionals on how the offer will be delivered. The consultation looks at how the entitlement will be delivered and how it will meet and be responsive to the needs of parents. The DfE are particularly interested in hearing opinions on areas including:

- How places might be delivered more flexibly;
- Provision for children with special educational needs and or disabilities;
- The role and responsibilities of local authorities in securing places;
- Information about childcare for parents;
- The grace period for parents.

The consultation closes on 6 June 2016. Please use this link to access the consultation: <https://www.gov.uk/government/consultations/30-hour-free-childcare-entitlement>

4.0 Risk Control Measures

4.1 Risk control forms an integral part of the Council's Business Planning and performance monitoring arrangements. As such, Directorate Risk Registers were updated in tandem with the development of the 2015-17 Directorate Business Plans.

4.2 Progress concerning the implementation of all Directorates high risk mitigation measures relevant to this Directorate will be reported at quarter two.

5.0 Progress against high priority equality actions

5.1 Equality issues continue to form a routine element of the Council's business planning and operational decision making processes. Additionally the Council must have evidence to demonstrate compliance with the Public Sector Equality Duty (PSED) which came into force in April 2011.

5.2 The council's latest annual progress report in relation to achievement of its equality objectives is published on the Council's website.

6.0 Performance Overview

6.1 The following information provides a synopsis of progress for both milestones and performance measures across the key business areas that have been identified by the Directorate.

Priority: Integrated Commissioning of Services to meet the needs of children, young people and families in Halton

Key Milestones and Measures

SCS CYP05: Percentage of 16-18 year olds not in education, employment or training				SCS SH04: Reduce the number of Young People who repeatedly run away in Halton				SCS CYP15: Under 18 conception rate, rolling quarterly average																																																		
<table border="1"> <caption>SCS CYP05 Data</caption> <thead> <tr> <th>Year</th> <th>Halton (%)</th> <th>Target (%)</th> </tr> </thead> <tbody> <tr> <td>2013/14</td> <td>8.4</td> <td>8.5</td> </tr> <tr> <td>2014/15</td> <td>6.3</td> <td>8.5</td> </tr> <tr> <td>2015/16</td> <td>5.1</td> <td>8.5</td> </tr> </tbody> </table>				Year	Halton (%)	Target (%)	2013/14	8.4	8.5	2014/15	6.3	8.5	2015/16	5.1	8.5	<p>Need data confirming for the chart to show comparable data across the two year period. Check with Clare Myring</p>				<table border="1"> <caption>SCS CYP15 Data</caption> <thead> <tr> <th>Year</th> <th>Halton (%)</th> <th>Target (%)</th> <th>England average (%)</th> <th>NW Average (%)</th> </tr> </thead> <tbody> <tr> <td>2009</td> <td>55</td> <td>56</td> <td>37</td> <td>43</td> </tr> <tr> <td>2010</td> <td>58</td> <td>56</td> <td>34</td> <td>38</td> </tr> <tr> <td>2011</td> <td>42</td> <td>56</td> <td>31</td> <td>34</td> </tr> <tr> <td>2012</td> <td>40</td> <td>56</td> <td>28</td> <td>30</td> </tr> <tr> <td>2013</td> <td>33</td> <td>56</td> <td>25</td> <td>27</td> </tr> <tr> <td>2014</td> <td>29</td> <td>55</td> <td>24</td> <td>25</td> </tr> </tbody> </table>				Year	Halton (%)	Target (%)	England average (%)	NW Average (%)	2009	55	56	37	43	2010	58	56	34	38	2011	42	56	31	34	2012	40	56	28	30	2013	33	56	25	27	2014	29	55	24	25
Year	Halton (%)	Target (%)																																																								
2013/14	8.4	8.5																																																								
2014/15	6.3	8.5																																																								
2015/16	5.1	8.5																																																								
Year	Halton (%)	Target (%)	England average (%)	NW Average (%)																																																						
2009	55	56	37	43																																																						
2010	58	56	34	38																																																						
2011	42	56	31	34																																																						
2012	40	56	28	30																																																						
2013	33	56	25	27																																																						
2014	29	55	24	25																																																						
Current progress	Target	Quarterly Progress	Direction of Travel	Current progress	Target	Quarterly Progress	Direction of Travel	Current progress	Target	Quarterly Progress	Direction of Travel																																															
5.1% (Jan 2016)	8.5%			There are 27 individuals that have created 111 episodes with the highest volume from Children In Care (CIC) and Children in Care of other local authorities (CICOLA) young people.	29.6 (Q3)	54.7																																																				

Ref	Milestones	Quarterly progress
CED02a	Early Years Childcare sufficiency undertaken annually and action plan implemented, and ensure a range of support for the growing population of funded vulnerable two year olds is appropriate within Early Years Foundation Stage settings.	
CED02b	Basic needs analysis undertaken for school place provision in primary and secondary sector, and appropriate capital funding streams determined to support any required investment.	
CED02c	Review of Specialist provision available for Halton children and young people.	
CED02d	Review and evaluate the commissioning statement to take account of the changing post 16 landscape and LEP priorities.	
CED03a	Review, implement and evaluate the joint commissioning of a Missing from Home and Child Sexual Exploitation Cheshire service by March 2016.	
CED03b	Review the function of the CSE team and effectiveness of the protocol.	
CED03c	Identify opportunities for joint commissioning SEN support and provision.	
CED03d	Strengthen the capacity of commissioned services to provide direct work to children and adult victims of domestic abuse.	

CED04a	Evaluate outcomes of current interventions (e.g. Teens and Tots, C-Card schemes, and identify actions, including new ideas and interventions required to meet targets, related to reductions in teenage conceptions	
CED04b	With Public Health, ensure young people are aware of sexual clinics and how to access them	
CED04c	Ensure the most vulnerable young people, (e.g. Children in Care, Young Offenders, disengaged young people) are aware of the risk associated with substance misuse	
CED04d	Further develop and evaluate substance misuse treatment pathways between hospitals and community services	

Ref	Measure	14/15 Actual	15/16 Target	Current	Direction of Travel	Quarterly progress
SCS CYP07	Rate of CYP admitted to hospital for substance misuse	17.62	24.6	21.8 (Q3)		
CED005	Take up of Early Years Entitlement for vulnerable 2 year olds	500	550	536		
SCS CYP13	Percentage of young people progressing to Higher Education	27% (2012/13 latest data available)	25%	25% (13/ 14)		
CED010	Timeliness of return interviews conducted with those missing from home/care	N/A	72 hours	72 hours	N/A	
CED012	Percentage of referrals to Children's Social Care identifying CSE as a concern where the CSE screening tool has been used (where referrer be a professional).	N/A	N/A	1 case referred, 16 screening tools completed	N/A	N/A
CED013	Percentage of young people who have received direct work to reduce risks of CSE report feeling safer	N/A	N/A	100%	N/A	N/A
CED014	Percentage of social workers and managers attending basic awareness CSE training	Two representatives from Children's Social Care have attended the CSE training this quarter.				
CED030	Percentage of Principal Manager and Practice lead posts filled by permanent staff	N/A	95%	100%	N/A	
CED031	Social Work vacancy rate for FTE	10.6	5	All posts filled or recruited to with start dates to be confirmed		
CED032	Agency rate for Social Work for FTE	17.1	2	There were 10 agency social workers in post 31 March.		

Supporting Commentary (key measures and notable exception reporting)

Not in education, employment or training: The proportion of young people aged 16-19 not in education, employment or training continues to be reduce. Performance at 5.1% is equivalent to 236 young people. (16 yr old 2.6%, 17 yr old 4.6%, 18 yr old 8.1%).

Missing from home or care and Child Sexual Exploitation: This quarter there have been 184 notifications from the Police and 10 from social care of children missing from home or care. This is an increase from the previous quarter. Return interviews are undertaken within 72 hours as per the target and this is due to an increase in staff as there are now two case workers. The procurement tender exercise was completed in July 2015 for both Missing from Home and Care and Child Sexual Exploitation. Catch 22 is the commissioned service across Halton and Cheshire West and Chester. Performance report cards have been created for each local authority area for both Missing and Child Sexual Exploitation. The CSE team has been reviewed and it was agreed that CSE, the identification, prevention and management of CSE should be addressed via the already existing pathways. The effectiveness of the protocol are being reviewed in conjunction with auditing activity on CSE cases. 100% of children concluding their direct work with the commissioned service this quarter reported feeling safer at point that they were closed.

School place provision: A basic needs analysis has been undertaken resulting in confirmation that, currently, the Local Authority operates with circa 9% surplus capacity within the Primary sector and

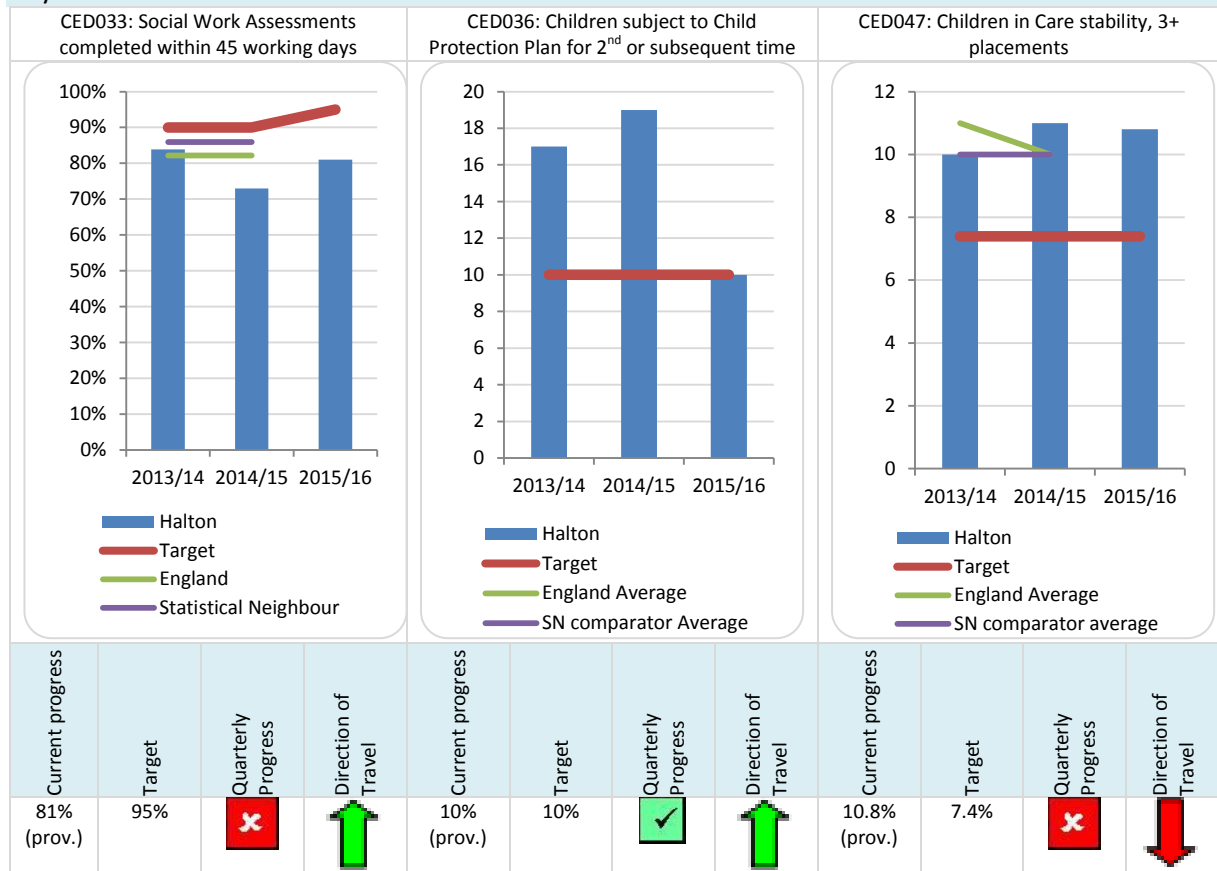
circa 12% surplus capacity within the secondary sector. It is anticipated this will change to 8% Primary surplus and 18% Secondary sector for 2015/16. The data is monitored twice per year using the Schools Census data and takes into account pupil migration (both in and out of borough) and new house build.

SEND and Specialist provision: The review and restructure of the SEND service has been completed and Specialist provision is now being looked at. A task and finish group have been set up and action plan drawn up. Specialist provision will be developed in line with the need predicted for 2020. Halton have jointly commissioned a service for advocacy and mediation with Cheshire West and Chester that may be expanded regionally. Halton are in the process of examining further opportunities for joint commissioning through our Sensory service.

Domestic Abuse: The domestic abuse family service has been recommissioned with Catch 22 as the new provider. Gateway DA training will take place for the adult and new family service in May 2016. Substance misuse: Pathways between community treatment services and hospitals are monitored to ensure links are being maintained. Regular 1:1 and group sessions with Children in Care and Young Offenders informing them of the risk of substance misuse are undertaken and this is monitored quarterly.

Priority: Effectively supporting the child through the Halton Levels of Need framework when additional needs arise

Key Milestones and Measures



Ref	Milestones	Quarterly progress
CED01a	Develop, implement and monitor the action plan in response to the Ofsted inspection of children's services in November 2014.	
CED01e	Through the annual conversation, ensure that the performance of all children's centres is in line with expectations. This will need to take into account any changes as a result of changes to Ofsted frameworks.	
CED07a	Monitor and review effectiveness of marketing, recruitment and retention strategy.	
CED08a	Evidence of reducing referrals to Children's Social Care and improved outcomes for children and young people evidenced in performance outcomes.	
CED08b	Improve outcomes for families involved in Troubled Families project, as evidenced by maximising the payment by results income	
CED08c	Develop Halton's offer in line with the Complex Dependency bid.	
CED08d	Continue to develop Halton's Early Intervention through multi-agency processes and teams at a locality level.	
CED08e	Implement and roll out of the e-CAF system.	
CED08f	Effectively use the performance information to ensure that Early Intervention is responsive to the trends of those being referred to Children's Social Care.	

Ref	Measure	14/15 Actual	15/16 Target	Current	Direction of Travel	Quarterly progress
CED034	Social Work Assessments completed within 15 working days	N/A	N/A	15%	N/A	N/A
CED035	Child Protection (CP) Plans lasting 2 years or more	0%	0%	2.5% (provisional)		
CED037	Child Protection cases reviewed in timescale	98%	100%	100% (provisional)		

Ref	Measure	14/15 Actual	15/16 Target	Current	Direction of Travel	Quarterly progress
CED038	Children in care cases reviewed in timescale	99%	100%	99% (provisional)		
CED039	Pre-proceedings diversions: Percentage of cases where pre-proceedings work diverted children in care	N/A	N/A	21	N/A	N/A
CED040	Average caseload per social worker	Expected to be available once the new social care workforce return has been collected, figures expected July 2016.				
CED041	Timescales for cases in court, within 26 week timescale	N/A	N/A	Reported Q1 2016-17	N/A	N/A
CED042	Number of multi-agency interventions (e.g. CAF) which are in place and operating	224	350	331 (provisional)		
CED043	Number of children involved in early intervention (e.g. CAF) during the year	455	N/A	593		N/A
CED044	Rate of referrals to Children's Social Care per 10,000 0-18 yr. olds	525	N/A	336 (provisional)		N/A
CED045	Number of parents who have received a package of targeted parenting support (through a parenting course or 1:1 Support)	Available July 2016.				
CED048	Stability of Children in Care: long-term placements	67%	78%	75%		
CED051	Percentage of Children in Care under section 20	35%	18%	13% (provisional)		
CED052	Percentage of Children in Care placed with parents	15%	8%	10% (provisional)		
CED053	Timeliness around permanency arrangements for children in care (adoption, SGO, other permanency arrangements)	Permanency plans are scrutinised by Managers and Independent Reviewing Managers to ensure that there is no drift or delay.				
CED054	Percentage reduction of external provision for children in care to reduce spend	Projections indicate that another 13 young people will exit external provision during the coming year, although there are likely to be other young people needing to be placed.				
CED055	Timeliness of placements for Children in Care for adoption	100%	N/A	88% (provisional)		N/A

Supporting Commentary (key measures and notable exception reporting)

Timeliness of assessments: 1075 of 1320 children's social care single assessments were completed within timescales. This is good performance compared to previous years and demonstrates a significant improvement in the final quarter of the year. 15% of the assessments were completed within 15 working days.

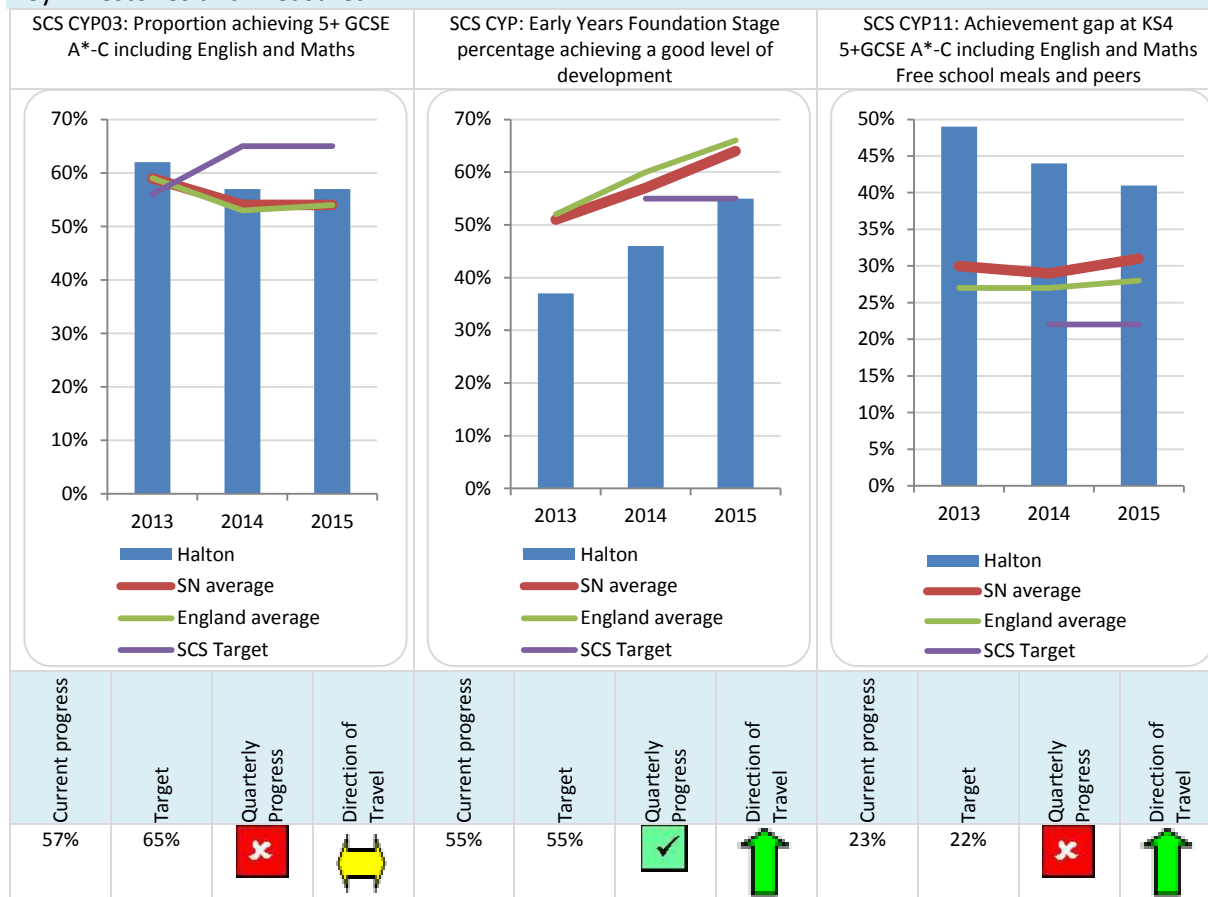
Children in care stability: The shortage of foster carers, particularly for older and more complex children, has had an impact on placement choice and the subsequent stability of placements (3+ placements in 12 months). Recruitment plans are being reconsidered for the coming year and regional collaboration is being explored to support this. In terms of long-term stability performance remains more positive, and sustaining long term placements is a priority.

Recruitment and Retention: Regional work is underway on reviewing the effectiveness of marketing, recruitment and retention. A protocol for the recruitment and rates for agency workers has been implemented and is reducing costs.

Complex Dependency and integrated working: iCART was launched on 4 April 2016 with the integration of agencies to provide one front door for services for children and families. The next phase will be to develop multi-agency locality teams. The eCAF system has been implemented for locality teams in the local authority. This will be rolled out during the year to other agencies.

Priority: Improving achievement and opportunities for all through closing the gap for our most vulnerable children and young people

Key Milestones and Measures



Ref	Milestones	Quarterly progress
CED01b	Complete RAG categorisation process for all EYFS settings by October 2015 and identify actions, including levels of support and intervention, required to improve inspection outcomes.	
CED01c	Based upon data analysis and feedback from the Cross Service Monitoring Group undertake categorisation process for all schools by October 2015 and identify actions, including levels of support and intervention, required to improve inspection outcomes.	
CED01d	Instigate a dialogue with Ofsted and LEP leads to inform commissioning statement priorities.	
CED05a	Undertake a review of outcomes for Early Years.	
CED05b	Conduct the annual analysis of school performance data for all primary, secondary and special schools during September to December 2015 (with further reviews undertaken at key points in the performance data release cycle).	
CED05c	Ensure appropriate deployment of school improvement support for identified schools and settings, including school to school support as appropriate.	
CED05d	Develop a post 16 monitoring framework that evaluates the breadth and quality of post 16 provision with Greater Merseyside leads.	
CED06a	Analyse, evaluate and report end of Key Stage achievement outcomes, including success in closing the gap by December 2015, and identify areas of need and support for Children in Care, Free school meals and non-free school meals.	
CED06b	With schools, monitor the impact of the Pupil Premium in closing the gap between Free school meals pupils and non-free school meals pupils nationally.	
CED06c	Refine and evaluate the education and health care plan process with a report and recommendations produced by September 2015.	
CED06d	Analyse the levels of absence, including persistent absence, across all phases on a termly basis.	
CED06e	Analyse the outcomes for children who have accessed the 2 year old entitlement to ensure this provision is closing the gap between the most vulnerable children and their peers.	

Ref	Milestones	Quarterly progress
CED09a	Monitor the implementation of the Care Leaver Action plan.	
CED09b	Monitor the implementation of the multi-agency strategy for Children in Care (CIC).	
CED09c	Achieve improved outcomes for children in care and care leavers.	

Ref	Measure	14/15 Actual	15/16 Target	Current	Direction of Travel	Quarterly progress
SCS CYP02	Proportion achieving L4+ KS2 Reading, Writing and maths	79%	82%	79%		
SCS CYP16	Percentage of children in care achieving expected outcomes	N/A	N/A	Refer comment (Q3)	N/A	N/A
SCS CYP12	Identification of SEN at 'School Support'	Information is available on the Local Offer website for schools to help with identification of pupils requiring additional support. This is under review from specialist staff.				
CED001	Percentage of maintained schools with overall effectiveness of Good or Outstanding	81%	82%	89%		
CED002	Percentage of Children's Centres with overall effectiveness of Good or Outstanding	86%	100%	86%		N/A
CED003	Proportion of children living in 10% most deprived LSOA engaging with Children's Centre services	87%	100%	Data expected July 2016	N/A	N/A
CED004	Percentage of Early Years settings (day care, Pre-schools, Out of school clubs and childminder) with overall effectiveness of Good or Outstanding	83%	83%	DN 87% PS 88% OSC 100% CM 76%	N/A	N/A
CED006	Achievement of Level 2 qualification at 19	88%	88%	87% (2014/15)		
CED007	Achievement of Level 3 qualification at 19	52%	53%	57% (2014/15)		
CED008	Inequality gap in achievement at L3 by age of 19 FSM	24%	26%	15% (2014/15)		
CED009	Inequality gap in achievement at L2 by age of 19 FSM	17%	16%	28% (2014/15)		
CED015	Percentage of primary schools below the floor standard	12%	4%	8% (2015/16)		
CED016	Percentage of secondary schools below the floor standard	0%	0%	0% (2015/16)		
CED017	Increase the percentage of pupils making at least expected progress in English from KS2 to KS4	N/A	74%	71%	N/A	
CED018	Increase the percentage of pupils making at least expected progress in Maths from KS2 to KS4	N/A	69%	61%	N/A	
CED019	Progress by 2 levels at KS2 Reading	N/A	91%	91%	N/A	
CED020	Progress by 2 levels at KS2 Writing	N/A	94%	93%	N/A	
CED021	Progress by 2 levels at KS2 Maths	N/A	92%	90%	N/A	
CED022	Achievement gap at KS4 5+ GCSE A*-C including English and Maths FSM and peers	24%	22%	23%		
CED023	SEN/non-SEN achievement gap at KS2 Reading, Writing and Maths	40.0% (13/14)	33%	57.0% (2014/15)		

Ref	Measure	14/15 Actual	15/16 Target	Current	Direction of Travel	Quarterly progress
CED024	SEN/non-SEN achievement gap at KS4 5+ GCSE A*-c including English and Maths	45.6% (13/14)	27%	45.6% (2014/15)		
CED025	Secondary school persistent absence	2.5%	5%	5.1%		
CED026	Rate of permanently exclusions from school	0.05%	0.35%	0.04%		
CED027	Absence of Children in Care	8%	4%	5%		
CED028a	Absence of Children in Need	14%	10%	10%		
CED028b	Absence of Children subject to Child Protection Plan	9%	5%	13%		
CED029	Close the gap in achievement between those previously in receipt of 2 year old early years entitlement and their peers at EYFSP	16%	12%	21%		
CED046	Emotional and behavioural health of Children in Care	Data expected July 2016				
CED049	Care Leavers in suitable accommodation at 19, 20, 21	83%	90%	93% (provisional)		
CED050	Care Leavers in Education, Employment or Training	50	65%	93% (provisional)		
CED057	Percentage of pupils placed in KS1/KS2 Resource Base for a year that have made 2 sublevels progress in Reading, Writing and Maths is over 60%	0.22%	0.35%	0.05% (end of March 2015)	N/A	

Supporting Commentary (key measures and notable exception reporting)




Attainment performance 2015: Attainment performance is reported in depth through an annual report to Children and Young People Policy and Performance Board. In terms of meeting targets there were a number where despite good performance and improvement, the ambitious targets were not met.

7.0 Financial Summaries

7.1 The Council's 2015/16 year-end accounts are currently being finalised. The year-end position for each Department will therefore be made available via the Intranet by 30th June 2016.




8.0 Appendix 1 – Explanation for use of symbols

8.1 Symbols are used in the following manner:

Progress		Milestone	Measure
Green		Indicates that the milestone is on course to be achieved within the appropriate timeframe.	Indicates that the annual target is on course to be achieved.
Amber		Indicates that it is uncertain or too early to say at this stage whether the milestone will be achieved within the appropriate timeframe.	Indicates that it is uncertain or too early to say at this stage whether the annual target is on course to be achieved.
Red		Indicates that it is highly likely or certain that the objective will not be achieved within the appropriate timeframe.	Indicates that the target will not be achieved unless there is an intervention or remedial action taken.

8.2 Direction of Travel Indicator

Where possible measures will also identify a direction of travel using the following convention:

Green		Indicates that performance is better as compared to the same period last year.
Amber		Indicates that performance is the same as compared to the same period last year.
Red		Indicates that performance is worse as compared to the same period last year.
N/A		Indicates that the measure cannot be compared to the same period last year.

8.3 Key for Operational Directors

AMc	Ann McIntyre, Operational Director, Education, Inclusion and Provision Service (EIP)
TC	Tracey Coffey, Operational Director, Children and Families Service (CFS)